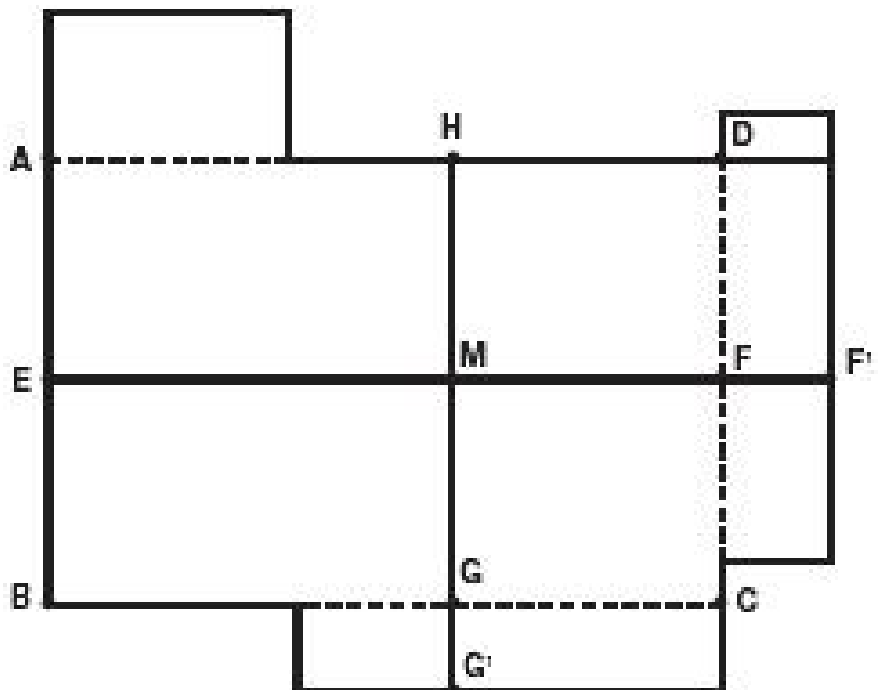


Installing Flotex Modular Flooring

- Always refer to and follow the recommendations in **Forbo's General Installation Guidelines** prior to installing Flotex Modular flooring.
- Always refer to and follow the recommendations in **Forbo's Substrate Evaluation and Preparation Guidelines** prior to installing Flotex Modular flooring.
- Beginning the installation is an implied acceptance of site conditions and liability for any failure directly related to inadequate site conditions becomes the responsibility of the installer and/or flooring contractor.
- Flotex Modular flooring may be installed on approved substrates on all grade levels.
- Store Flotex Modular cartons unopened.
- For releasable installations, use Forbo V 1190 adhesive. Use a 3/8" nap roller to apply the Forbo V 1190 adhesive. Replace roller when proper coverage is no longer attainable.
- **For permanent installations only**, use Forbo V 1190, Sustain 1195, FST 1299, or 660 adhesive. Use a 1/16" x 1/16" x 1/16" square notch trowel to apply the adhesive. Replace the trowel blade when proper coverage is no longer attainable.
- Install cartons in consecutive order.
- It is possible that during storage the pile will be compressed and may take several days to recover following installation.
- Flotex Modular is thicker than the Flotex Sheet. Mixing Flotex Modular and Flotex Sheet products in the same area will require ramping of the sheet product to meet the same height as the modular flooring when combined. Special attention needs to be paid to ensuring that the proper heights are achieved. Failure to account for this height difference during installation may result in undue wear and possible damage to the product. This is critical when installing borders or motifs.
- Flotex Modular has a directional pattern which may be installed either with the arrows running in the same direction, alternating directions (quarter turned) or in opposite directions (half turned). Always confirm the recommended Flotex Modular installation direction before beginning the installation.
- Although some collections can be installed straight, **there is no guarantee** that the lines from one tile to another will match up during installation. For this reason, it is recommended to first dry lay some of the tiles for approval of the arrow direction **prior to the start of installation**.
- All material installed should be from the same batch.
- Wait a minimum of five days following the installation before conducting initial cleaning. For installations over non-porous substrates, additional time may be necessary because the adhesive may take longer to dry and cure.
- Take pride in your work and be Professional at all times.
- For additional information, contact Forbo's Product Support & Education Services at 1-800-842-7839 or www.forboflooringNA.com.

Layout

- Flotex Modular flooring products are fit using conventional tile fitting techniques.
- It is customary to start from the center of the room. In corridors and small spaces, it may be simpler to work lengthwise from one end, using the center line as a guide.
- The center line is drawn as follows (Figure 1): A chalk line is snapped from center of wall A/B (Point E) to the center of wall C/D (Point F). The center of line E/F is found (Point M). Draw a perpendicular line through Point M using the 3:4:5 method to establish G/H.
- Starting at Point M, measure out lengthwise and widthwise to the walls to make sure you will have at least a half of a tile at the border. Adjust lines E/F and G/H if necessary.



Installing Flotex Modular Flooring

Directional Pattern for Installation

- Because of the unique patterns and designs of the Flotex Modular collections, it is important that the flooring is installed with the arrows running in the recommended direction(s).
- When installing Flotex Modular straight (or broadloom), all the arrows **must** run in the same direction throughout the entire installation. For example, arrows should all be facing either north, south, east, or west.
- When installing Flotex Modular with the patterns that can be 1/4 turned or 1/2 turned, the arrows **must** remain in the same two directions throughout the entire installation. For example, installations that are 1/4 turned, all arrows must face either north and east or south and west, alternating for every other tile. For installations that are 1/2 turned, all arrows must face either north and south or east and west, alternating for every other tile.
- Below is a chart that lists the recommended installation directions for each of the collections.

Collection Name	Straight	1/4 Turn	1/2 Turn	Half Drop	Double Herringbone	Herringbone	Weave
Calgary	X	X	X				
Metro	X		X				
Penang		X					
Salsa, Tango, Paso	X						
Connery				X			
*Plank Collections				X	X	X	X

***NOTE:** Plank collections include: Avenue, Ballet, Bayside, Box-Cross, Cement, Cleo, Concrete, Converge, Empower, Encourage, Ensure, Explore, Frameweave, Lava II, Lindy, Marble, Montage, Ombre, Prairies, Reclaimed Wood, Refract, Seagrass, Suzani, Timber, Triad, Tweed, Wood, and Woven.

****IMPORTANT!** Although some collections can be installed straight, there is no guarantee that the lines from one tile to another will match up during installation. For this reason, it is recommended to first dry lay some of the tiles for approval of the arrow direction **prior** to the start of installation.

Releasable Installation

- For releasable installations, use Forbo V 1190 adhesive.
- After establishing the starting lines, apply the adhesive using a 3/8" nap roller ensuring enough adhesive is being applied (refer to the spread rate on the adhesive bucket lid sticker). Be sure to apply adhesive all the way to the starting line without leaving any voids.
- Allow the adhesive to turn clear and dry to the touch before installing the flooring. After turning clear, the flooring **MUST** be placed into the adhesive within four (4) hours.
- Begin laying tiles at the starting point, ensuring that the tile is placed exactly along the layout lines. If the first few tiles are not installed accurately, the entire installation will be affected.
- Immediately roll the flooring in all directions using a 100 lb. roller to ensure proper adhesive transfer. Additional rolling is required during adhesive setup to ensure that the material is flat and fully adhered.
- The use of a three-section wall roller or steel seam roller is required at walls, under toe kicks or anywhere the full weight of a 100 lb. roller cannot access or be applied.
- Remove fresh adhesive residue immediately with a clean white cloth. Dried adhesive can be removed with a clean white cloth and Forbo Adhesive Remover. If this is not available, a solution of properly diluted neutral pH cleaner may be used. The area should then be rinsed with clean, cool water to remove all residues from the floor.

Permanent Installation

- For permanent installations, use Forbo V 1190, Forbo Sustain 1195, Forbo FST 1299, or Forbo 660 adhesive.
- After establishing the starting lines, spread the adhesive using a 1/16" x 1/16" x 1/16" square notch trowel.
- Be sure to spread adhesive all the way to the starting line without leaving any voids.
- Begin laying tiles at the starting point, ensuring that the tile is placed exactly along the layout lines. If the first few tiles are not installed accurately, the entire installation will be affected.
- The tiles must be installed into wet adhesive. Do not spread adhesive in an area larger than can be installed while ensuring 100% wet transfer to the backing of the material.

Installing Flotex Modular Flooring

- The open time and working time of adhesives will vary depending on site conditions such as ambient temperature and humidity, the porosity of the substrate and air circulation. It is the installer's responsibility to make adjustments to specific conditions as may be necessary to ensure 100% wet adhesive transfer to the material backing. A general indication of proper open time is when a light touch produces transfer of adhesive to the finger, but a firm touch will flatten and "smear" the adhesive. For additional information, refer to ***Forbo's Adhesive Technical Data Sheets***.
- A short open time will be necessary. The adhesive should be allowed to develop body before placing the flooring material into the adhesive, but **DO NOT ALLOW THE ADHESIVE TO DRY**.
- Check for adhesive transfer frequently. There must be **100% wet** transfer of adhesive to the material backing in order to achieve a secure bond. 100% wet transfer is a continuous film of adhesive, when wet, on both the backing of the material and the substrate with no trace of trowel marks or ridges. The flooring material **must remain in contact with the adhesive while the adhesive is drying and curing**.
- Immediately roll the flooring in all directions using a 100 lb. roller to ensure proper adhesive transfer. Additional rolling is required during adhesive setup to ensure that the material is flat and fully adhered.
- The use of a three-section wall roller or steel seam roller is required at walls, under toe kicks or anywhere the full weight of a 100 lb. roller cannot access or be applied.
- Proper tile placement and rolling will result in a complete "explosion" of the trowel ridges, creating a continuous flat film of adhesive. Complete transfer of the tile backing will appear as only the impression of the tile backing in the surface of the adhesive. No standing trowel ridges should be visible.
- The time it takes to mark and cut the border tiles must be considered when planning the installation. Without adequate planning, the working time of the adhesive around the perimeter may be exceeded before the tiles are installed. This will result in an inadequate bond of the perimeter tiles. Always plan the sequence of spreading adhesive so that the perimeter tiles can be cut and placed into the adhesive before the adhesive working time has been exceeded.
- Remove fresh adhesive residue immediately with a clean white cloth. Dried adhesive can be removed with a clean white cloth and Forbo Adhesive Remover. If this is not available, a solution of properly diluted neutral pH cleaner may be used. The area should then be rinsed with clean, cool water to remove all residues from the floor.

NOTE: If using Forbo 660 adhesive, refer to ***Forbo's 660 Adhesive Technical Data Sheet*** for additional information.

Decorative Inlays

- Lay and adhere all field areas in the room following the guidelines outlined in these instructions.
- Measure out the locations for the decorative inlays. Mark off the inlay locations with white chalk on the surface of the Flotex.
- Place a cutting guide in position along the chalk lines and cut the field piece along the lines.
- Remove the cut piece and scrape any ridges that may remain from the original adhesive.
- Cut the inlay piece to fit, re-apply adhesive and place the inlay into position. Be sure not to leave any voids in the adhesive.
- Using a steel seam roller, press the inlay firmly into place.
- Roll the completed inlays with a 100 lb. roller. A three-section wall roller or steel seam roller is required at walls, under toe kicks or anywhere the full weight of a 100 lb. roller cannot access or be applied.
- Remove fresh adhesive residue immediately with a clean white cloth. Dried adhesive can be removed with a clean white cloth and Forbo Adhesive Remover. If this is not available, a solution of properly diluted neutral pH cleaner may be used. The area should then be rinsed with clean, cool water to remove all residues from the floor.

Decorative Borders

- Draw pencil lines around the area where the field material will stop, making sure to allow for trimming the border material.
- Lay the field material so that it extends slightly over the pencil lines.
- Using the pencil lines as a spread line, adhere all field areas in the room following the guidelines outlined in these instructions.
- Be sure to spread adhesive all the way to the pencil line without leaving any voids.
- Transfer border pencil lines to carpet tile with Chalk line. Using a straightedge as a guide, cut the field material along the chalk lines.
- Apply adhesive in the area of the border and place the border material into position. Be sure not to leave any voids in the adhesive.
- Using a steel seam roller, press the border firmly into place.
- Trim the border material at the perimeter. Immediately roll the flooring in all directions using a 100 lb. roller to ensure proper adhesive transfer. Additional rolling is required during adhesive setup to ensure that the material is flat and fully adhered.
- The use of a three-section wall roller or steel seam roller is required at walls, under toe kicks or anywhere the full weight of a 100 lb. roller cannot access or be applied.

Installing Flotex Modular Flooring

Stairs

- Flotex Modular CANNOT be wrapped on stairs. A nosing will be required.
- A stair nosing must be used with separate pieces of Flotex for each tread and riser.
- Adhere the Flotex on the treads and risers using Forbo V 1190, Forbo Sustain 1195, or Forbo FST 1299 adhesive.

Forbo's General Installation Guidelines contain additional information and are available for download at www.forboflooringNA.com. For additional information, contact Forbo's Product Support & Education Services at 1-800-842-7839.